

**J. LaPorte & Associates**

Facilities Planning \* Architecture \* Project Management  
 514 Sligh Blvd NE. Grand Rapids, Michigan 49505 \* Ph/Fax 616-364-5800

# Clinic/Community Offices

Combining Medical Clinic and Hispanic Center of Western Michigan

**Clinica Santa Maria**  
**St. Mary's Health Services**  
**Grand Rapids, Michigan**



**Clinica Santa Maria**  
**Hispanic Center**  
**of Western Michigan**

**Project Profile**

**Architect:**

This facility was designed by John LaPorte while employed by another firm

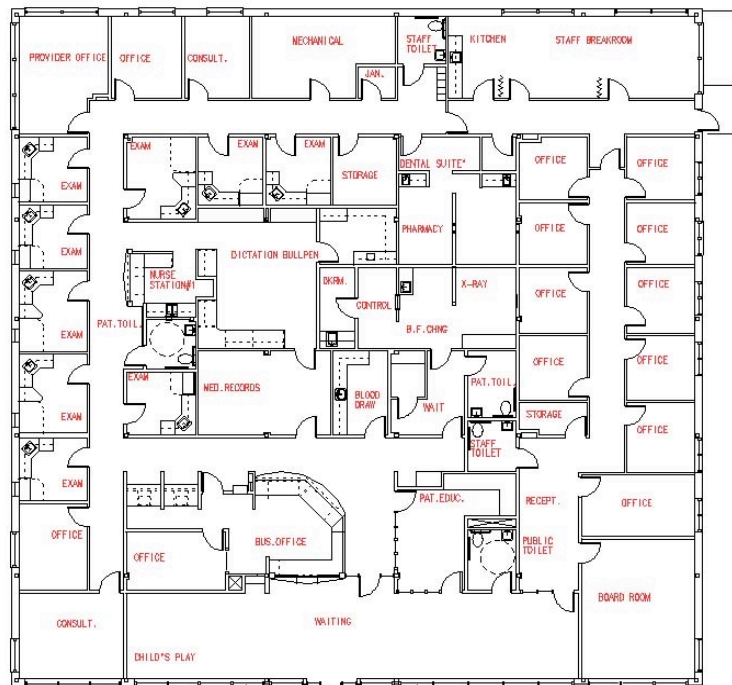
**Facility Type:**      Healthcare

**Project Information**

**Square Feet:**      10,000SF  
**Date occupied:**      March 1997  
**Number of Floors:**      One  
**Construction Cost Per Square Foot:**      NA

**Project Highlights**

Originally conceived as a medical clinic only, it was found that new office space for the Hispanic Center was also needed within the inner city Hispanic community.



**Medical Clinic**

**Hispanic Center Offices**