

J. LaPorte & Associates

Facilities Planning * Architecture * Project Management
514 Sligh Blvd NE. Grand Rapids, Michigan 49505 * Ph/Fax 616-364-5800

Medical Clinic Building

Pennock Healthcare Systems

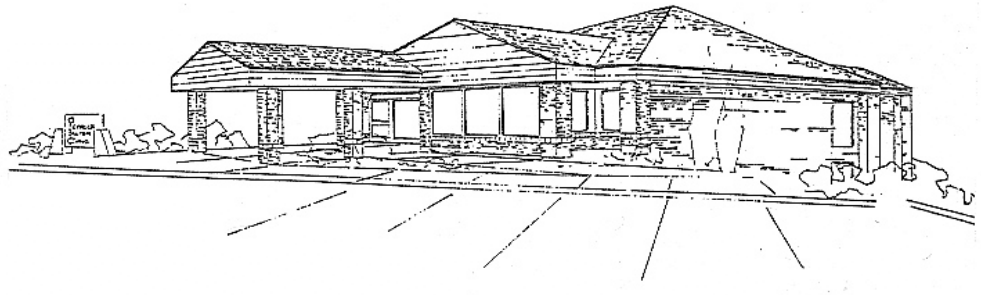
Delton, Michigan

Project Profile

Architect: J. LaPorte & Assoc.

Consultants: None

Facility Type: Health Care



EXTERIOR PERSPECTIVE

Project Information

Square Feet: 7000 SF

Date occupied: Spring, 1995

Number of Floors: Two

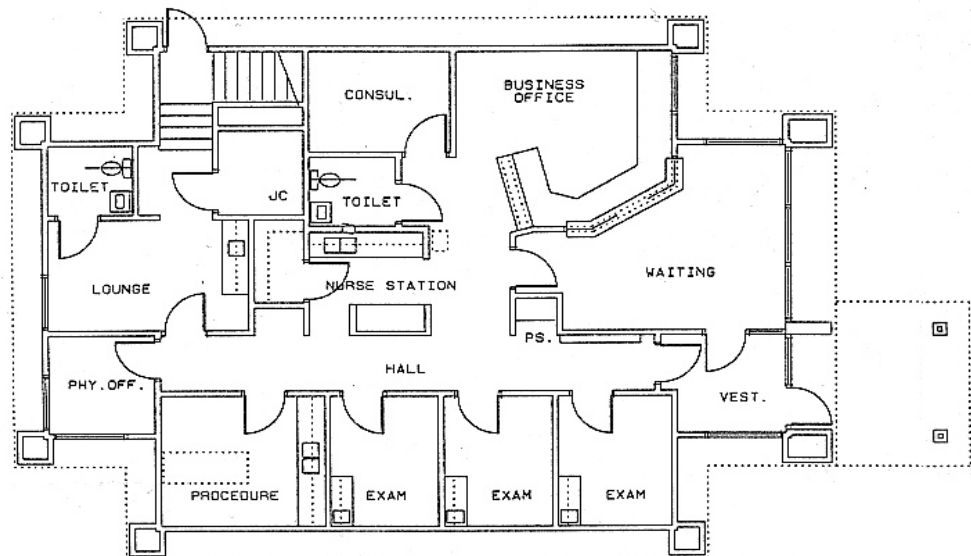
Construction Cost

Per Square Foot: withheld

Project Highlights

New construction on a site with excessive landfill depths.

- Clinic for single physician practice
- Office space on lower level



FLOOR PLAN